



Annual Impact Report

2025-26





LAND ACKNOWLEDGEMENT

We respectfully acknowledge the land on which we gather as the ancestral homelands of the Beothuk, whose culture has now been erased forever. We also acknowledge the island of Ktaqmkuk (Newfoundland) as the unceded, traditional territory of the Beothuk and the Mi'kmaq. And we acknowledge Labrador as the traditional and ancestral homelands of the Innu of Nitassinan, the Inuit of Nunatsiavut, and the Inuit of NunatuKavut. We recognize all First Peoples who were here before us, those who live with us now, and the seven generations to come. As First Peoples have done since time immemorial, we strive to be responsible stewards of the land and to respect the cultures, ceremonies, and traditions of all who call it home. As we open our hearts and minds to the past, we commit ourselves to working in a spirit of truth and reconciliation to make a better future for all.



Our Path Forward...



OUR PURPOSE

Daybreak Child and Family Centre is a community where children and families are supported to grow and thrive.



OUR VISION

A community where healthy and nurturing resources are within the reach of every child and family.



OUR VALUES

Welcoming without judgement.

Connection and trusting relationships.

Supporting families to reach their potential.

Evidence informed best practices.

Partnering to promote resilience and stability for children and families.



Message from the Executive Director

As Executive Director, I am excited to present our Annual Impact Report for 2025-26 on behalf of Daybreak Child and Family Centre. For more than 54 years, the Daybreak staff have been a lifeline for over 15,000 children and families when they needed it most. From home visits to community playgroups, outreach, family-centered childcare, family and social supports, and food security, we provide care and compassion to hundreds of families each year. With over five decades of proven impact in the community, Daybreak remains committed to aiding families through innovative, compassionate and evidence-informed programming, leading to better physical, mental, and social well-being.

Entering the final year of our 2024–2027 Strategic Plan brings a clear focus for our path forward. I am honored to lead the strategic priorities of growth, sustainability, community engagement, innovation, and governance - all of which drive our child-focused and family-inclusive commitment. Together, we are building a community where children and families can truly grow and thrive.

I am thankful for the support of the Daybreak Board of Directors, the leadership team, families, stakeholders and staff throughout this journey as we plan to have an even bigger community impact. I also acknowledge the generous support of the Government of Newfoundland and Labrador, specifically the Early Learning and Child Development Division of the Department of Education and Early Childhood Development; the Department of Social Supports and Well-Being, and Newfoundland and Labrador Health Services.

This past year focused on strengthening engagement and improving well-being for children and families of Daybreak. Through impactful new pilot projects, strategic growth, an expanded food security initiative, and new partnership programs, we are closer to our vision: a community where healthy, nurturing resources are within the reach of every child and family. I am proud of our staff, whose dedication has created lasting connections with vulnerable children and families. By responding directly to complex community needs, our team delivered meaningful support to over 479 families this year. With a focus on building trust and improved child and family outcomes, Daybreak staff completed over 1300 home visits agency-wide. Daybreak staff responded to food insecurity by supporting over 500 families with more than 3300 meals via the Takeaway Meal's Program, our Barbara Hammond Food Cupboard, and Second Harvest Food Rescue. The creation of the Collaborative Pilot combined with use of the Ages and Stages developmental screening tools resulted in early intervention services and access to early diagnostics for children, providing the 'right care at the right place, at the right time'. These opportunities resulted in improved child development outcomes and increased connections to resources for families.

This year, we formed several new community partnerships and deepened existing ones. This includes NL Health Services, The Community Sector Council NL, the YWCA, United Way and Second Harvest. Additionally, we have formalized our long standing partnership with Brighter Futures. Achievements to date include the Collaborative Pilot, continuation of the Play Therapy Pilot with Repose Wellness Collective NL, and the creation of an agency wide database as a result of Bluedrop ISM. Daybreak was also accepted to present at the 19th World Congress of the World Association of Infant Mental Health in Toronto, Ontario this coming Fall.

I am incredibly proud of the dedication shown by the Daybreak staff, leadership team, and the Board of Directors over the past year. It is an honor to lead this organization as we build an even greater impact in our community.

Renée Williams, MSW, RSW
Executive Director



Message from the Board Chair

Welcome to Daybreak Child and Family Centre Annual General Meeting. As we conclude this fiscal year, I want to express my sincere appreciation to our Board of Directors, staff, volunteers, donors, and community partners for their dedication and support.

This year was marked by meaningful progress toward our strategic priorities. Together, we strengthened governance practices, expanded program reach, and improved organizational sustainability. The Board remained focused on oversight, accountability, and long-term planning while supporting the Leadership Team through a changing operational environment.

Key accomplishments this year included:

- Working towards the completion of our three-year strategic plan
- Recruitment of three new board members with diverse expertise
- Continued investment in equity, accessibility, and organizational development
- Strengthening strategic priorities for the future

While challenges remain, the resilience and commitment demonstrated across the organization have positioned us well for the year ahead.

On behalf of the Board of Directors, thank you to everyone who contributed their time, expertise, and passion to advancing our mission.

As we look ahead, we remain optimistic and energized by the opportunities before us. Thank you for your continued trust and support.

Gail Stanford
Chair - Board of Directors

Board of Directors 2025 - 2026

- | | |
|--------------------------|------------|
| • Gail Stanford | Chair |
| • Corina Crocker | Vice Chair |
| • Martha Traverso-Yeppez | Director |
| • Virginia Mills | Director |
| • Maryanne Tucker-Primm | Director |
| • Ruth Slater | Director |
| • Julia Warren | Director |
| • Sheena Winsor | Director |



Message from CUPE Local 3017

CUPE Local 3017: A Year In Review

We take this opportunity to recognize the collaborative efforts that have contributed to the 54 years of growth and success of Daybreak Child and Family Centre. Over the years, many people have helped to shape into what we are today.

CUPE Local 3017 has been a part of that journey since 1979. We are a small Local, we represent staff in every program that is offered at Daybreak. Local 3017 has continued to support The Barbara Hammond Food Cupboard through regular financial donations, as well as supporting efforts that are held throughout the year. As a union we continue to partner with management to create a healthy workplace where everyone feels appreciated and valued.



CUPE takes an active role in advocating not just for its 800,000 members but for everyone. We recognize that all families have a right to participate in high quality, accessible, early learning programs and family supports. Strong communities make for a more equitable society for all.

Executive and Members of CUPE: 3017

Over the past year, Daybreak was fortunate to mentor a number of students from:

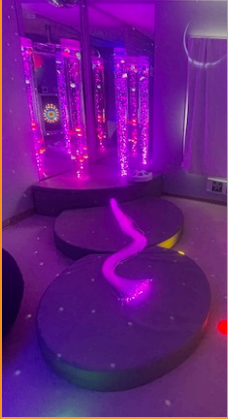
- College of the North Atlantic - Early Childhood Education;
- Academy Canada - Early Childhood Education;
- Memorial University - School of Social Work and School of Nursing.

We are happy to announce that 2 ECE graduates (pictured right) have joined our Daybreak team!



Kassidy & Jessica

Children



SNOEZELEN SENSORY ROOM
Over 220 children utilized this space,
with over 1000 meaningful visits.

This space has also been an integral
component of the collaborative pilot with NL
Health Services, as it offers a unique
treatment space.

Strengthening
relationships by
initiating over
850
meaningful
conversations with
caregivers via email
and phone calls.



There have
been 10 ISSP
transition
meetings
with Pre-K
children and
their
Primary
schools
since May
2025.



Over
230

Ages and Stages Questionnaires were
completed with children across all
programs, which aided in the advocacy
of services for children who are at risk of
delays in development.

ECEs attended

78

meetings with specialists and
professionals working with
children and families since
May of last year.

Families

Family Home Visitation Program

65 Families were provided with in-home support via the Family Home Visitation Program.

100% of FHVP families with children in out-of-home placements saw an increase in their access visitation frequency after starting the program.

17 Protective Intervention Files belonging to families were closed during their involvement with the FHVP. These families were deemed not in need of protective intervention after their involvement with the FHVP.

9 Families were reunified during their involvement with the FHVP.



Family Support Team

Our Family Services Coordinator held

204

parent and/or caregiver support sessions.



3300

Meals were provided to families via Daybreak's Takeaway Meals Program, Food Cupboard and Second Harvest.



Over
1300

Home visits were completed across all Daybreak programs



Community Outreach

479 families were supported to attend over 68 programs/groups at the Centre.



Over 2000 family visits were made to over 500 outreach groups/programs located in the community.



44 families have benefited from the Maple Leaf Food Security Project since 2024. 23 families are currently being supported by the project.



52 birth parents were supported in Healthy Baby Club with 34 healthy births.



542 families were supported through our Takeaway Meals Program and Food Cupboard.



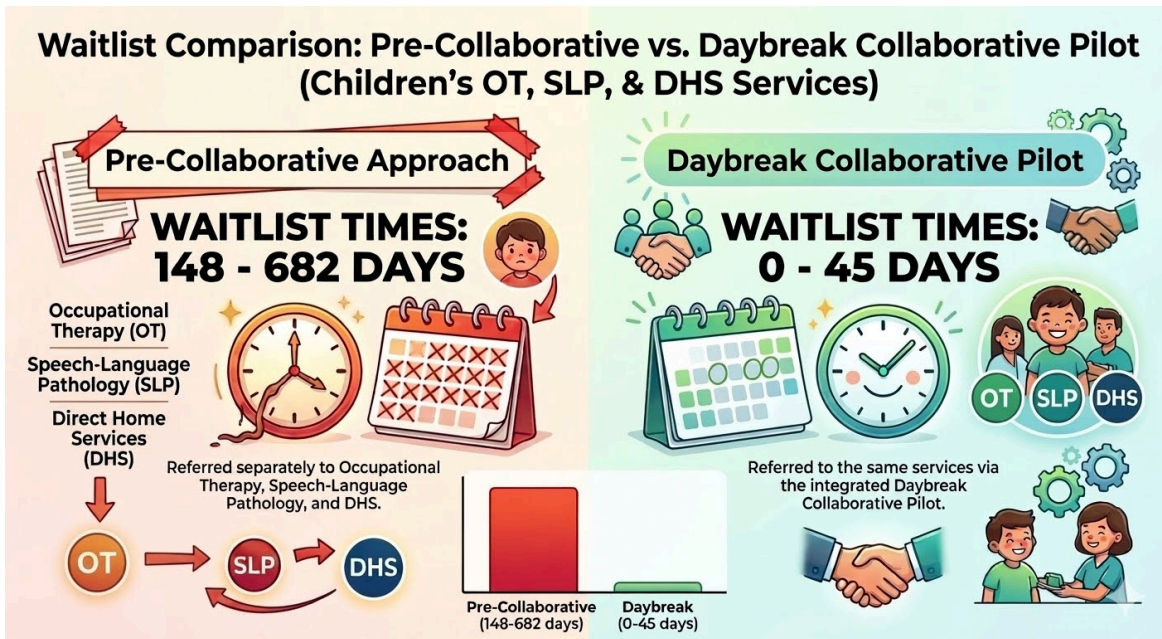
Happy mother's to Rhonda and Jane

Thanks for gladly supporting all mothers that comes your way at daybreak centre. You ladies are amazing and we love you for that.



Collaborative Pilot Project

This year, Daybreak got the opportunity to partner with NL Health Services on a unique and collaborative pilot project. This partnership allows for the provision of early intervention services such as Occupational Therapy, Speech Language Pathology, Child Management Specialist Services, and the support of a Developmental Pediatrician for children at Daybreak. This tiered approach seeks to provide the “right care at the right place, at the right time” and includes one-on-one intervention, group support, treatment and access to early diagnostics for children who would otherwise be waitlisted.



This collaboration is already yielding measurable impacts, mostly pertaining to the wait times for services.

To date, there have been 6 children diagnosed with Autism Spectrum Disorder through Dr. McWhirter, the team’s Developmental Pediatrician.

MEET THE TEAM



Dr. Jenna McWhirter,
Developmental Pediatrician



Sarina Barker, SL-P &
Emily Eaton, OT



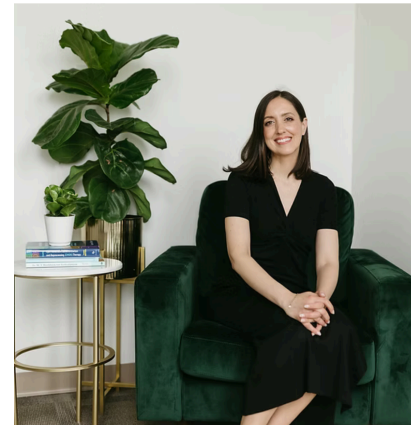
Alexandria Blake, CMS

Achievements and Highlights

Play Therapy Pilot - "Building Futures : providing high risk children access to critical trauma interventions"

This pilot was made possible thanks to the United Way NL 2025 Community Fund. The Pilot program with Repose Wellness NL. Clinical sessions started May 7, 2025, with children and families who were otherwise waitlisted for services. This grant also provided funding for staff training in Theraplay, specifically Sunshine Circles, an adapted group format for licensed childcare.

Daybreak is excited to offer this program for a second time thanks to funding received by the United Way NL 2026 Community Fund. Clinical sessions are scheduled to begin in June 2026. This will allow children and families access play therapy, resulting in impacts that will be felt across both lifespans as well as future generations to come.



Maggie Dawson,
MA, CCC, RP-Q
Repose Wellness NL



Quotes from mothers of children who attended Play Therapy:

“ (My child's) confidence and communication skills have sky rocketed since seeing Maggie on a regular basis.”

“Play therapy gave (my child) the confidence to let his personality shine through. Now, instead of moving to the back of the room at the sight of someone new, he will interact and invite them in his play.”

“I don't know what she (the clinician) did, but it sure is working. He's a different kid!”

Growing Up...As Parents: Dads Helping Dads



As of May 2026, Daybreak has offered 3 sessions of the innovative parenting group, “Growing Up...As Parents: Dads Helping Dads”. Supporting all those who identify as fathers in our community, this group was made possible by the generous funding provided by the Office of Women and Gender Equality as part of their Community Violence Prevention Initiative. This group is led by its co-creators, Carradine Lambert, Director of Family and Social Supports, and Alex Cornick, Children's Services Coordinator.

14 dads have participated in this group thus far, with great success and feedback from all participants. A fourth session of “Dads Helping Dads” will be offered in Fall 2026...stay tuned!

Growth and Diversification

Daybreak Executive Director, Board Chair and Director of Finance were honored to complete the Thriving Non-Profits Funding Diversification Course, made possible by the CSCNL. We were also partnered with coach Christine Snow (pictured right). This course resulted in a clear plan for funding diversification, a revamped 'Tis the Season Christmas Campaign' that yielded increased donations for families, additional successful grants and increased partnerships and cost savings.



Daybreak is honored to deepen our partnership with Brighter Futures for the development of unique and integrated programming. Our shared knowledge creates spaces for change and innovation in the provision of family resource program supports and services.



We recently received funding through the Community Addictions Prevention and Mental Health Promotion Fund, NL Health to provide transitional supports to families and children with unique needs as they move from intensive supports provided by Daybreak.

This project is ongoing and we are excited to see the future impact on families.

Daybreak was selected by United Way for the "Gift of Communication" with the IABC NL. Communication professionals volunteered their time and expertise to help Daybreak strengthen how we tell our story. The outcome was the creation of a communication plan.



Daybreak is excited to announce that thanks to Bluedrop ISM, we have officially built and launched our new agency-wide database to keep all our information centralized and accessible. This is the first part of a multi-phased system with more programs and features to come.

Daybreak Partners

Daybreak works in partnership with many agencies and individuals in the community. Many of Daybreak programs would not be possible without the generous financial contributions, community donations, space availability and moral support it receives from the general community, service organizations, and government partners. Working together we continue to enhance opportunities and outcomes for children and families in our community.

For the 2nd year we helped deliver coats for the “Bundle Up for Brad” coat campaign that resulted in more than 600 coats for children and families.

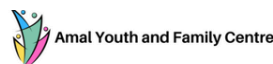
We were honored to name our family donation room in memory of the late Brad Kerrivan, who believed that no one should be cold.



THANK YOU!

In 2019 Daybreak was invited to help Bethesda Church and C4 to develop a series of workshops for and by newcomers. The CCPWG was formed with the goal of helping newcomer parents understand what it means to parent in Newfoundland and Labrador, Canada.

Since 2019 CCPWG has developed and implemented a 5-workshop based series on parenting which C4 coordinates using a peer facilitation model to foster a safe learning environment for newcomer parents.



Daybreak Donors and Friends



UIS Eastern Icebreakers
'Tis the Season' annual
donation



Regiment Hockey Cares
donation for the Food
Security Program



United Way Day of Caring



Donation of new books
and toys for Christmas



Family Bingo hosted by
The Women's Sorority



Mark's Work Warehouse
Donation



Exxon Mobil Volunteer
Week Daybreak Deli

merci

1632 bags of clothing
donated in 2025-26!
With over 60 family visits to
the Brad Kerrivan
Clothing-room per week.

'Tis the Season
2026 Campaign
Giving the Gift of
Hope and Warmth
raised over
\$11,500.00.

شكرآ

GRACIAS

\$9,183.22 which is the
equivalent of 2821
meals distributed to
families, thanks to
Second Harvest
donations.

Daybreak is honoured
to be supported by
so many individuals who
help children and
families achieve their
potential.

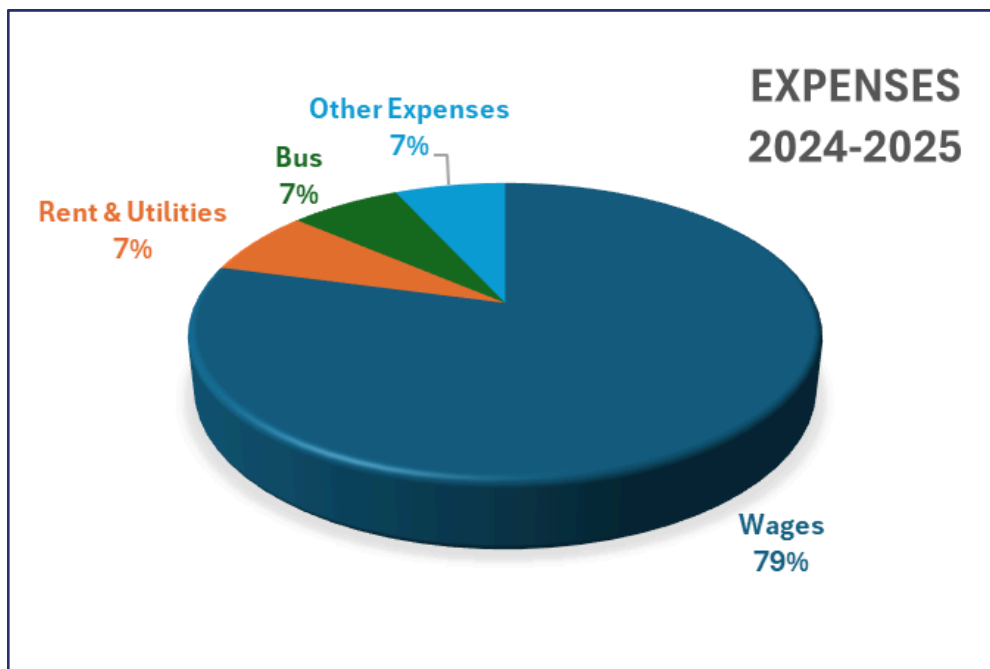
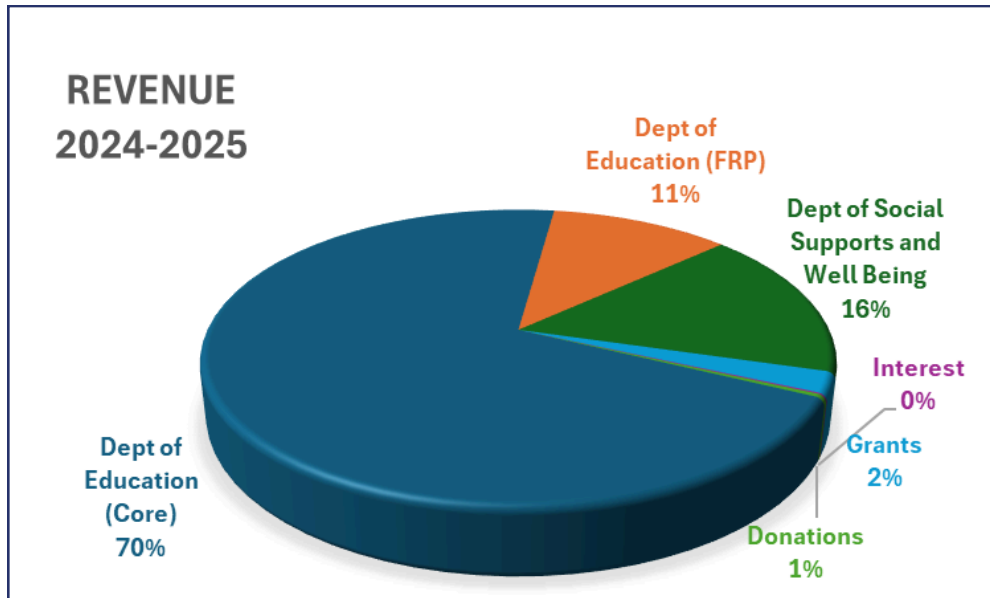
THANK
YOU

A Daybreak parent and Daybreak Deli volunteer shared this
about her experience:

"I really like (the Deli) for the company, the experiences and helping others.
Also being able to volunteer".

Daybreak Parent Child Centre Association

This Consolidated Financial Statement includes data for Daybreak's core funding, Community Programs (DCP), and Family Home Visitation Program (FHVP).



For a complete copy of the audited statements, please call: (709) 726-8373

